

# Policy Clarifications - LIHEAP PLA-18197-603

**Submitted: 9/16**

**Agency: CAOs**

**Citations:**

**Subject: LIHEAP Disability Supplement Question**

On the Household Screen there is the question “Does the household qualify for a LIHEAP disability supplement?” How do I know if the household is eligible for a LIHEAP disability supplement?

---

**Response By: Division of Federal Programs/LIHEAP**

**Date: 9/26/16**

This question replaces the previous question that asked if anyone in the household received financial assistance for a disability. The new question is designed to ensure the household is issued the correct supplemental payment. Supplemental payments will be issued to households in which an individual meets one of the specified vulnerable household criteria; age 60 or over, age 5 or under, and/or disabled. Households can receive up to 3 cumulative supplemental payments based upon the composition of the household.

Reminders:

- Individuals cannot receive more than one supplement even if they meet more than one vulnerable criterion, and the household can only qualify for each criterion one time. The maximum any household can receive is \$175.
- For LIHEAP, **an individual is considered disabled if eligible for Medical Assistance (MA) due to a disability** ~~the definition of a disability is either receiving benefits in a Medical Assistance disability category (including TANF categories) or receiving financial assistance for a disability~~
- **The system will review the Disability screen to automatically identify individuals who are eligible for MA due to a disability.**
- When determining supplements, age takes precedence over disability. In order for an individual to qualify for the supplement based on disability they cannot be used to make the household eligible for a supplement based on age.

Answer ‘Yes’ if:

- There is a disabled individual in the household between the ages of 6 and 59, or

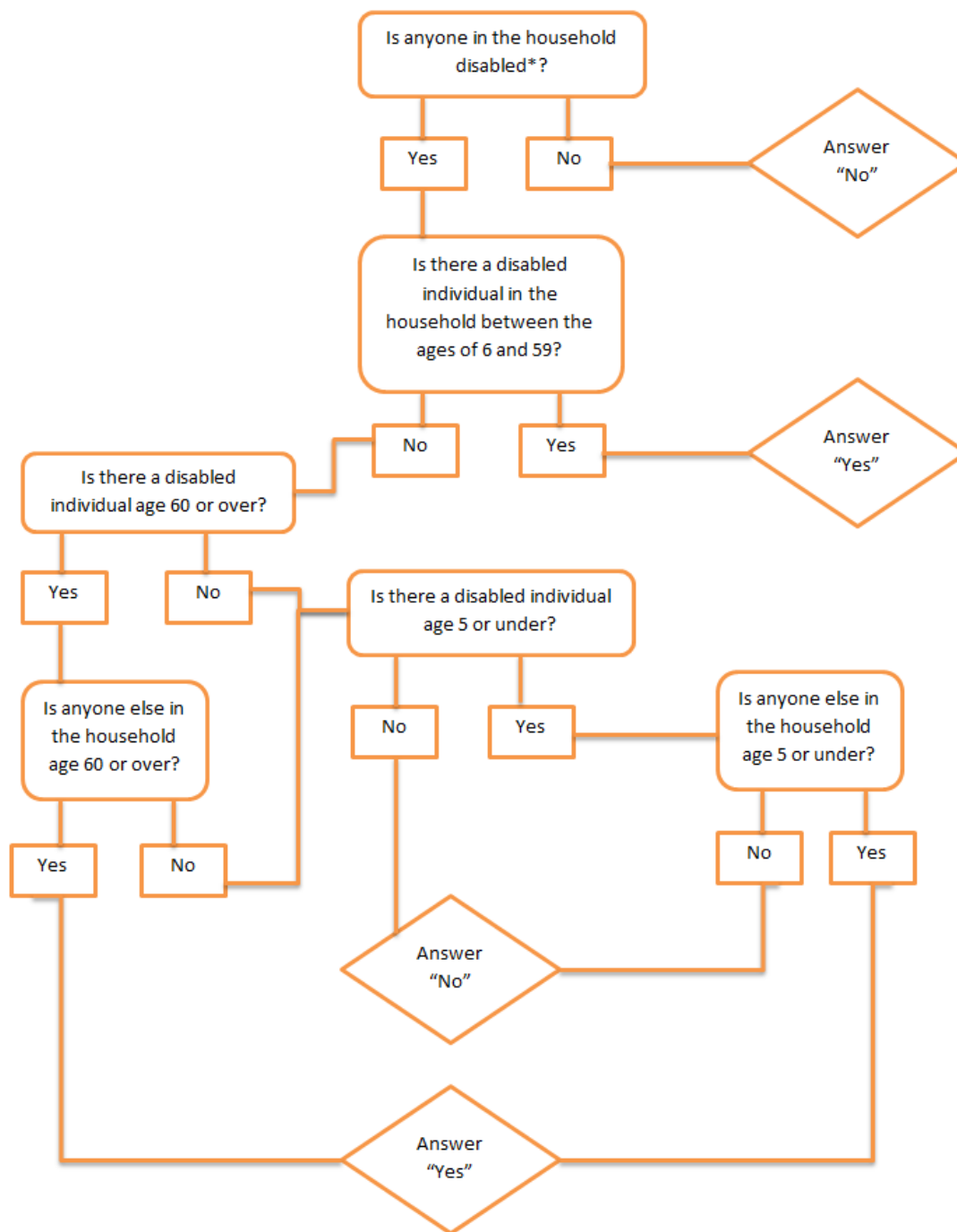
- The disabled individual also qualifies for an age criteria and there is another household member that meets the same age criteria.

Answer 'No' if:

- The only disabled individual in the household is not between the ages of 6 and 59, or
- The disabled individual meets an age criteria and there is no other member of the household who meets the same age criteria.

This question is very important in LIHEAP only cases, as there are no disability screens to prompt the system to issue the disability supplement. To ensure proper supplemental payments are issued to households please be sure to review household individuals for eligibility for each supplemental criteria.

Please see attached flow chart for more details.



\* Disability is defined as either receiving benefits in a Medical Assistance disability category or receiving financial assistance for a disability